

September, 2019

Welcome to the 2019-20 School Year!

Welcome to the 2019-20 School year at Terminal Park Elementary.

In my second year at Terminal Park, I have come to know the community, staff, and students well enough to understand that there are some relatively simple steps we can take to make this a great school.

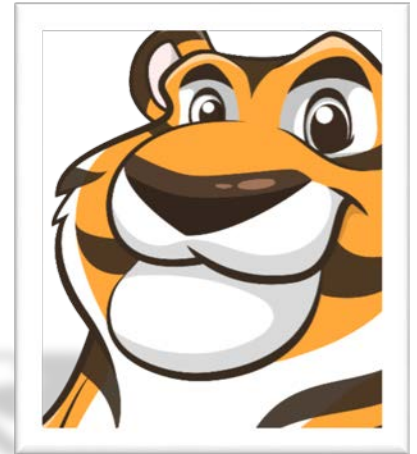
One very important step is to ask you, families, guardians and parents to become more involved in the school. I am inviting each of you to volunteer, join PTA, attend an event or simply reply to the notes, Remind messages or emails from your student's teacher. Working together in support of students, being on the same page, and communicating about challenges are all going to help us support each student as we try to make Terminal Park the best school.

Please look to this newsletter in the future for information on what is happening now and in the future in the building.

Mike Weibel, Principal

Tiger Traits

The staff at Terminal Park Elementary are working hard to instill several critical expectations for our students. These are lifelong traits that will help them become contributing members of our society. We focus on each trait over several weeks ending in a celebration where we recognize students who have done an especially good job at demonstrating these traits. Below are the traits we teach:



Integrity

"Integrity is doing the right thing even when no one is watching" C.S. Lewis

- **Be honest**
- **Have courage to do the right thing**
- **Do your own work**
- **Be reliable, doing what you say you're going to do**
- **Choose friends with integrity**
- **Be loyal, stand by friends and family**
- **Think for yourself and make good choices**

Respect

Treat others the way you want to be treated, the golden rule

- **Talk to adults in a positive way**
- **Take time to understand someone who is different than you**
- **Use good manners and not bad language**
- **Be considerate of other people's feelings**
- **Deal peacefully with anger, insults, and disagreements**
- **Graciously accepting "NO" for an answer**
- **Use kind words and actions with yourself and others**

Compassion

Compassion means we care about others, treat them with kindness, and feel a strong desire to help people in need. Compassion is empathy in action.

- **Be kind and show others you care**
- **Express gratitude**
- **Forgive others**
- **Help others in need**
- **Stand up for someone being picked on or teased**
- **Do something for someone else without being asked**
- **Give others compliments**

Join PTA

We encourage all community members to join the PTA. The PTA is tremendously important to the school in that it provides opportunities like the Ice Cream Social, support for teachers, and activities for our students. Beyond the fun activities, a healthy PTA can be a real partner in creating a school environment that is welcoming and supportive to our students. We need your help and to hear your voice. The PTA is a fun and easy way to help make Terminal Park a great school.

[Follow this link to the membership form.](#) Download it and join today!



Responsibility

When you take responsibility for your actions you are saying "I am the one who's in charge of myself and I do what I am supposed to do"

- Always do your best
- Think before you act - consider the consequences
- Be accountable for your actions and choices
- Do what you are supposed to do
- Use self-control
- Take care of school and personal property
- Deal appropriately with disappointment
- Complete and turn in school work and homework

Perseverance

Perseverance is continuing to try something even though it's difficult

- Keep on trying
- Use positive self-talk
- Say "I can or I will..." statements
- Seek solutions to problems
- Be patient
- Have a positive attitude
- Learn from your experiences or mistakes
- Complete what you start

Terminal Park PTA Ice Cream Social, Open House

Thursday, September 12

5:00 – 7:00

Terminal Park Gym

- Meet teachers
- Tour the school and playground
- Learn about the district strategic plan
- Learn how to support students & teachers
- Learn about the P.T.A.
- Meet the principal & assistant principal